

# Australia

**September 1 – 7, 2009**

**“WALKABOUT”**

**the Red Center of the Australian Outback,  
Listen to the Aboriginal Elders,  
Feel the power of the land,  
Commune in the Aboriginal Dreamtime  
through sacred ceremony,  
Prepare for Planetary & Celestial Initiations**

Now is the time of healing, of retrieval of ancient memory through the assimilation of missing shards of soul threads; a time to establish personal and collective sovereignty toward the unified wholeness of the planet Earth and the Human race as we are irresistibly moved to our **Divine** evolution.

Using **sacred ceremony**, we will anchor into the first umbilical cord of the planet at the center of Australia's outback (**Uluru**), retrieve soul fragments via the **Portal of the Divine Mother** at **Atila (Mt Connor)** and listen to the whisper of the Gods wisdom at the **Valley of the Winds (Kata Tjuta)** and so much more.



**Uluru**



Helicopter

photo of Ulu•u

**Uluru** is a massive sandstone rock in the southern part of the Northern Territory, central Australia and is sacred to the Aborigines of the area, known as the **Anangu**. It lies southwest of the nearest large town, **Alice Springs**; 450km (280mi) by road. **Uluru** is the traditional name for the rock, **Ayers Rock** is the name given by European explorers, and **Uluru/Ayers Rock** is the official name. Archaeological findings to the east and west indicate a date more than 10,000 years ago as the beginning of human settlement in the **Uluru** region.

Believed to have been formed by the activities of ancestral beings in creation time (or **Dreamtime**), the beautiful site includes many caves, waterholes, and ancient rock paintings. Australia's native people believe themselves to be direct descendents of these ancestral beings, and continue to carry on the rituals and responsibilities associated with their ancestral land. The aboriginals of western and central Australia call themselves **Anangu**, a word that originally meant simply "human being" but has come to refer to aboriginals as opposed to Australia's European descendents.

**Ulu•u** is sacred to the **Aboriginal** people of the area and is listed as a World Heritage Site for its natural and man-made attributes. In recent years, **Uluru** has also become important for New Age practitioners.

The **Aboriginal** inhabitants of Australia, the **Anangu**, believe the Central Australian landscape was created at the beginning of time by ancestral beings. According to **Aboriginal** myth, the world was unformed and featureless until ancestral beings emerged from the void and journeyed across the land, creating all living species and the features of the desert landscape. **Uluru** is regarded as spectacular physical evidence of the ancestors' activities during the creation period.

The record of **Dreamtime** can be found in the rock itself, its fissures, cliffs and caves. The main path up to the summit of the rock is the traditional route taken by aboriginal ancestors upon their arrival at **Uluru** in the creation time. Various outcrops represent different ancestral spirits, and by touching the rock, an Aborigine can invoke the spirits for blessings and communicate with **Dreamtime**.



Fire lizard and wallaby

According to one **Aboriginal** myth, two tribes of ancestral spirits were invited to a feast in the area, but became distracted by beautiful **Sleepy Lizard Women** and dallied at a waterhole. Angry at being stood up, the waiting hosts sang evil into a mud sculpture that came to life as the dingo, a wild dog that has been known to carry off babies. There was a terrible slaughter followed by a great battle, which ended in the deaths of the leaders of both tribes. The earth itself rose up in grief at the bloodshed—and this is **Uluru**.

**Uluru** remains sacred to several **Aboriginal** tribes in the area, who still use it for rituals and leave paintings in its caves. The meanings of the rock's features are passed on to youth in songs at initiation ceremonies conducted in the caves along the base of **Uluru**. The rock is also sacred to New Age practitioners, some of whom have adopted **Dreamtime** into their beliefs.

### Climbing

The **Anangu do not climb Uluru** because of its great sacredness, and request visitors not climb the rock, partly due to the path crossing a sacred traditional **Dreamtime** track, and also due to a sense of responsibility for the safety of visitors to their land. A sign at the base of **Uluru** posted by the Aborigines specifically requests visitors not to climb their sacred rock. It reads in part:

*"Our traditional Law teaches us the proper way to behave. We ask you to respect our Law by not climbing **Uluru**. What visitors call 'the climb' is the traditional route taken by ancestral **Mala** man upon their arrival at **Uluru** in the creation time. It has great spiritual significance. We have a responsibility to teach and safeguard visitors to our land. 'The climb' is dangerous and too many people have died while attempting to climb **Uluru**. Many others have been injured while climbing. We feel great sadness when a person dies or is hurt on our land."*



However, since **Uluru** is currently leased to Australia as a national park, visitors are free to climb the rock and there is a marked path with chain handhold provided to make it a little safer. Many tourists climb the rock each year, but as the sign above points out, the climb is no easy task and some have even died in the attempt. Over the years there have been at least 35 deaths relating to climbing incidents.

It is reported those who take rocks from the formation are cursed and suffer misfortune. There have been many instances where people who removed such rocks attempted to mail them back to various agencies in an effort to remove the perceived curse.

About 25km from **Uluru** is another sacred rock formation known as **Kata Tjuta** ("many heads") or the **Olgas**. The **Uluru-Kata Tjuta** National Park includes a Cultural Center, where you can learn more about Aboriginal culture and the sacredness of **Uluru**.

The Aboriginal community of **Mutitjulu** (pop. 300) is near the western end of



**Uluru.** From **Uluru** it is 17km to the tourist town of **Yulara** (pop. 3,000), which is just outside of the National Park.



**Atilia (Mt Connor)**



### **Atila, Uluru, Kata Tjuta and the Divine Mother Portal**

The world's most powerful Portal of Divine Mother energy is centered at **Uluru** and extends out 100km, including **Atila** and **Kata Tjuta**. **Atila, Uluru** and **Kata Tjuta** form a straight line approximately east to west and we travel in that order.

**Atila** is the place of union for aspects of the soul that separated off in pain. We are blessed to have a private campsite all to ourselves in this place of deep healing. Lying on the Mother Earth under the stars at **Atila**, you have the gift, the blessed opportunity to let go the pain in your soul. The Mother will gladly take your pain if you are willing to let go and return to the union of self.

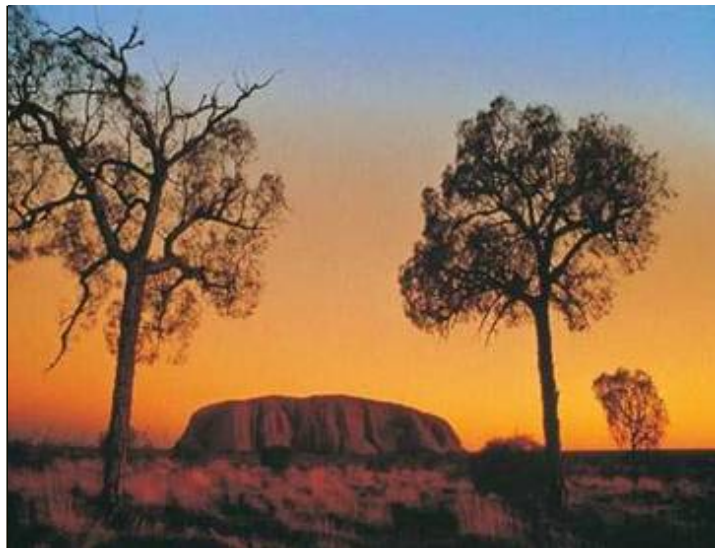
This is the Grace of **Atila**. How gracefully, easily the pain can be taken away there. Accept this gift and your life will blossom more fully. Simply being on the land, open and ready to let go brings healing in this powerful place. With the facilitation of Rebecca & Karen, the celestial timing and the land itself, the potential of worldwide soul retrieval is enormous.

On then to **Uluru, The Portal of Grace**, the place where we celebrate communion of our souls in wholeness after the healing and soul retrieval at **Atila**.

We will **WALKABOUT** the seven mile radius of **Uluru**, learn and connect with caves, fissures, coves and pools of this ancient and sacred portal. We will hear stories of the Aboriginal culture and the Creation Dreamtime to prepare our hearts and minds for experiences along the way.

Then by virtue of our sacred walk and communion with the **Red Center**, we will anchor into the planetary umbilical cord. Through ceremony we will expand our

consciousness to align with Source and retrieve our original creation DNA/RNA blueprint. The download of this original creation intent paves the way for the unfolding of all future becoming, both personal and planetary.



Sunset at Uluru



Kata Tjuta

At **Kata Tjuta**, a place of connection to our Higher Selves and the Stars, we find the stillness and opportunity to hear the wisdom and transmissions of the highest order.

**Dreamtime** memories surge forth to be known, understood and carried forward through our newly unified vessels of hearts, bodies and minds.

Here in the **Valley of the Winds**, we can absorb the frequency of Destiny as we listen to the ancient and future whispers come to rest in the open and willing hearts we bring to this sacred place.

As we complete this journey of personal and planetary service, all around will respond in clever and sometimes dramatic ways.

There will be time to integrate and review at a quiet and beautiful sand dune before our return flight to **Sydney**.



Cloud Angel

## Here's the Deal:

**Day 1** – Meet at **Sydney** Airport; fly into **Alice Springs**, afternoon tour to Simpson's gap w/Aboriginal guide, dinner & overnight at lodge.

**Day 2** - drive to **Atila (Mt Connor)** via Ebenezer & Curtain Springs, overnight at **Atila**

**Day 3** - deepening connection with the land, mountain/portal, healing processes, overnight at **Atila**

**Days 4 - 6** drive on to **Uluru (Ayers Rock) & Kata Tjuta**, setup camp, meet Uncle Bob (**Uluru's** Aboriginal Elder, healer, wise man), hear stories and information regarding this sacred mound & the Aboriginal story, walk-around **Uluru** (seven mile trek), visit the sacred valley of **Kata Tjuta** (25km from **Uluru**), receive and integrate **Dreamtime** memories from Aboriginal and Cosmic sources

**Day 7** – Completion at quiet sand dune and fly out from Ayers Rock (Yulara) airport to **Sydney**





Our bus and gear trailer

**INCLUDES:** Group transport from **Alice Springs** to **Atila** (Mt Connor), **Uluru/ Ayers Rock & Kata Tjuta**, cabin/camp accommodations for six nights, all meals, park fees, Aboriginal guides, and facilitation of events through Rebecca & Karen.

\* "Transport, camp & meal preparation provided by professional Outback tour operators"

**NOT INCLUDED:** Roundtrip airfare to **Sydney**, airfare from **Sydney** to **Alice Springs & Yulara** to **Sydney**, tips, souvenirs.

**SUGGESTIONS:** Arrive in **Sydney** at least **24 hours** prior to flight to **Alice Springs** so as to acclimate to the time change/jet lag and purchase items needed if not already packed.

**BRING:** (or purchase in **Sydney**) Water bottle, shade hat, hat fly net, sunnies (sunglasses), walking shoes & socks, long pants, swimsuit, sunscreen, insect repellent, camera/video

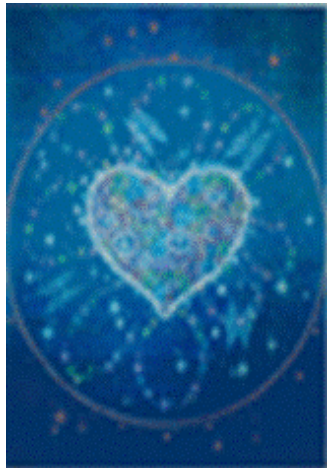
**NOTES:** You will be in the "Outback"! It will be early spring but it is a desert environment with a sometimes harsh climate & real wildlife (snakes, goannas, kangaroos, dingoes).



Sunset over Uluru



*Dreamtime  
Yoga*



**Call (530) 823-3352 or (530) 305-7337**  
or email to

[theheart@wavecable.com](mailto:theheart@wavecable.com) or [karenb@psyber.com](mailto:karenb@psyber.com)

to secure your place with your deposit.  
MasterCard/VISA accepted

**COST: \$1999 USD;**

based on min 8 participants  
group limited to 12 participants

**50% deposit required**

with balance due August 1<sup>st</sup>

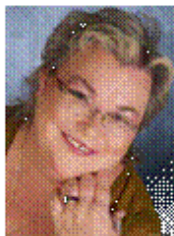
**CANCELLATION POLICY:**

\$100 NON-REFUNDABLE before 08/01/09

\$500 NON-REFUNDABLE after 08/01/09

Since 1999 Karen and Rebecca have traveled extensively to worldwide Sacred Sites, facilitating personal and planetary healing through ceremony and initiation. Their gifts of accessing and transmitting Source energy, opens the door for Emotional Healing, Body Centered Awareness and Higher Self connection.

Create a life of incredible magic!



[www.theexpandedheart.com](http://www.theexpandedheart.com)

[www.sacredsitetours.com](http://www.sacredsitetours.com)

[www.dreamtimeyoga.com](http://www.dreamtimeyoga.com)